

BULLFROG

OUR

PRODUCTION

FACILITIES

Welcome to
Bullfrog HQ!

We are located at **69 Cremorne Street, Cremorne.**

To enquire about booking space at HQ, please email:
bookings@bullfrogmedia.com.au

- 01 Rates
- 02 Production Facilities
- 03 Meeting Spaces
- 04 HQ
- 05 The Area



RATES

Rates

The Studio

Half Day
4 hours maximum
\$500 + GST

Full Day
8 hours
\$800 + GST

Edit Suite One

Half Day
4 hours maximum:
\$250 + GST

Full Day
8 hours
\$400 + GST

On site editing available on request

Cooee Podcast Room

Per Hour
90 minute minimum
\$150 + GST

Half Day
4 hours maximum
\$400 + GST

Lighthouse Boardroom

Half Day
4 hours maximum)
\$300 + GST

Full Day
8 hours
\$500 + GST

Flare Meeting Room

Half Day
4 hours maximum
\$250 + GST

Full Day
8 hours
\$400 + GST

Siren Amphitheatre

Enquire for **pricing** and **availability**
Email: bookings@bullfrogmedia.com.au



PRODUCTION FACILITIES

The Studio

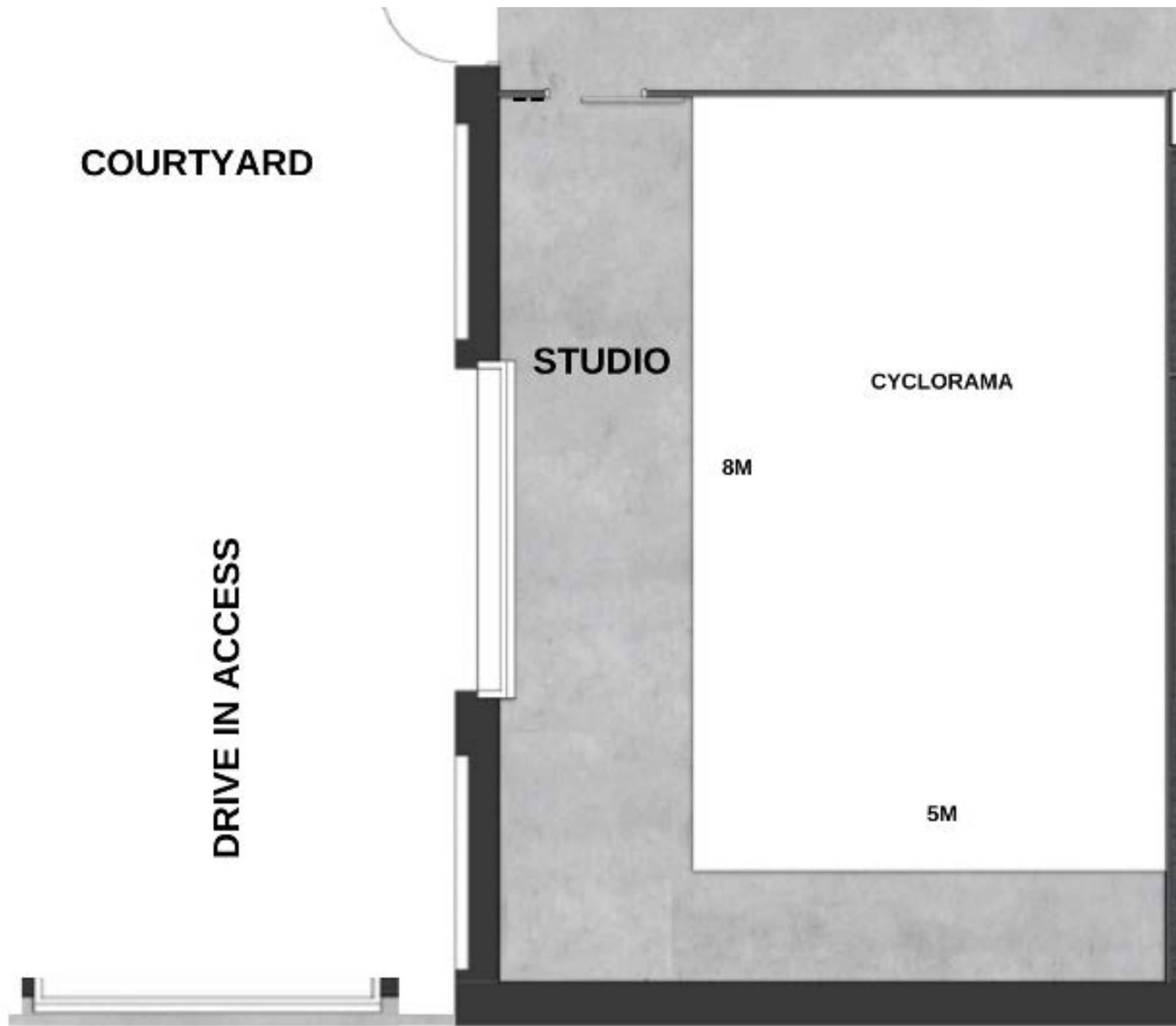
Cost:
Half Day (4 hours maximum): \$500 + GST
Full Day (8 hours): \$800 + GST

- Inclusions:
- Cyclorama: 8m(L) x 5m(D) x 5m(H)
 - Drive in access
 - Courtyard access
 - Changing facilities
 - Full function kitchen
 - Cyclorama
 - Abundant natural light
 - All day parking nearby
 - Furniture options
 - Wifi
 - 3m extension cord
 - Trestle tables
 - C Stands x2
 - Sandbags x2



The Studio

The studio has fantastic drive in access at ground level with the ability to unload directly from your vehicle into the studio.



The Edit Suite

Cost:
Half Day (4 hours maximum): \$250 + GST
Full Day (8 hours): \$400 + GST

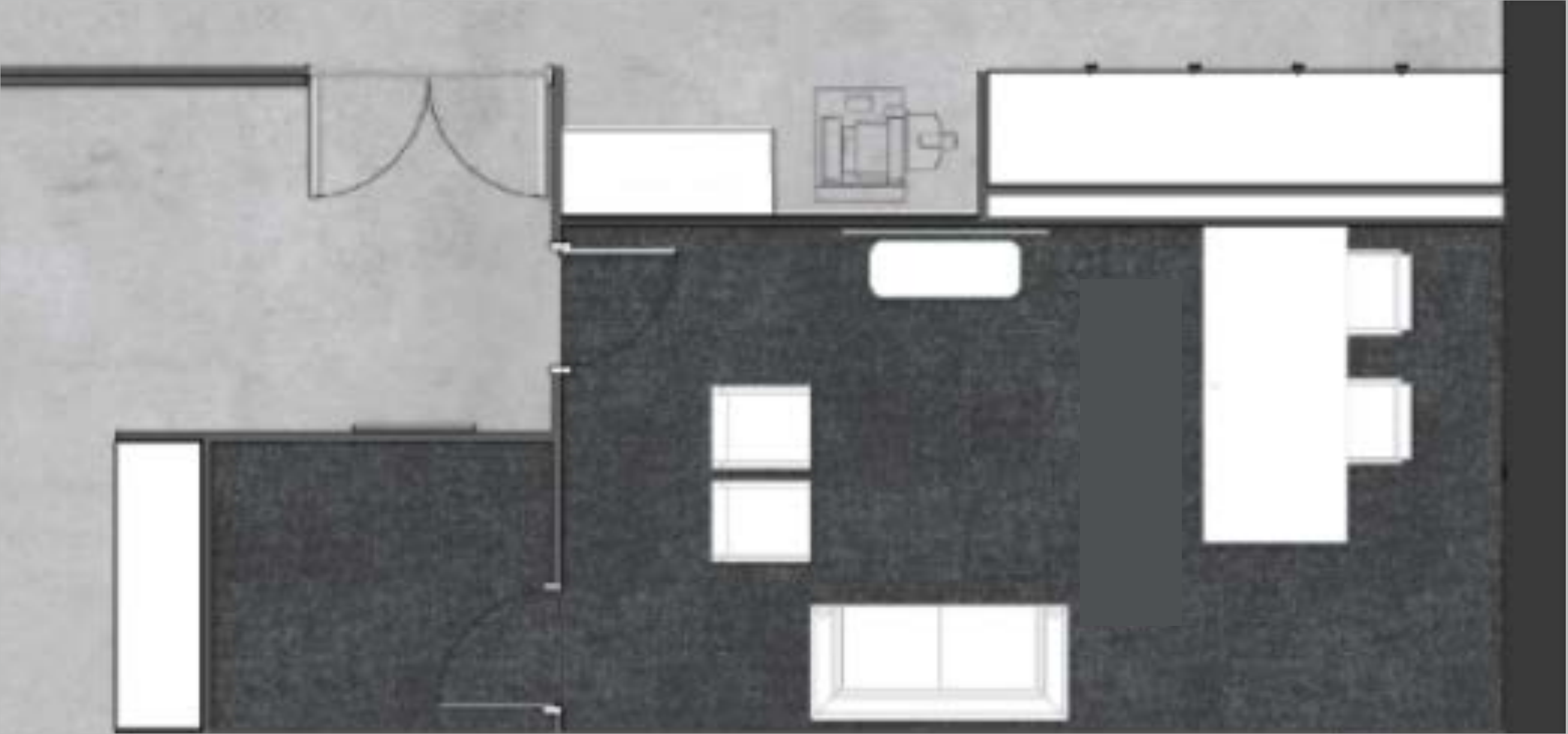
Offline Editing:
Editor (includes Edit Suite hire)
\$250 + GST per hour

Master Output (Broadcast)
\$100 + GST per output

Master Output (Online)
\$60 + GST per output

- Inclusions:
- iMac 5k - Resolve
 - LG Colour Monitor
 - BMD DaVinci Resolve Mini Panel
 - Pin Board Walls
 - 65 inch TV Screen

Please advise if you are interested in booking VO Booth.





Cooee Podcast Room

Cost:
Per Hour (2 hour minimum): \$150 + GST
Half Day (4 Hour Maximum): \$400 + GST

- Inclusions:
- 4 chairs
 - Pin Board Walls
 - 55 inch TV Screen
 - Airtame for easy screen sharing
 - Rodecaster Pro, up to 4 users.
 - Step by step usage instructions provided

Editing is available for your podcast if required - refer Edit Suite information under Production Facilities.



A photograph of a modern office interior. The scene features several glass-walled meeting rooms. In the foreground, a large glass wall reflects the interior. To the right, a wall is covered in large, square, light-colored tiles. The floor is made of light-colored tiles. The overall atmosphere is bright and professional. The text 'MEETING SPACES' is overlaid in large, bold, white capital letters on the left side of the image.

MEETING SPACES

11

Lighthouse Boardroom

Cost:
Half Day (4 hour maximum): \$300 + GST
Full Day (8 hours): \$500 + GST

- Inclusions:
- 14 chairs
 - Pin Board Walls
 - 75 inch TV Screen
 - AppleTV console for easy screen sharing
 - Instructions are supplied for connection.



Flare Meeting Room

Cost:
Half Day (4 hour maximum): \$250 + GST
Full Day (8 hours): \$400 + GST

- Inclusions:
- 8 chairs
 - Pin Board Walls
 - 55 inch TV Screen
 - Airtame for easy screen sharing
 - Instructions are supplied for connection.



Siren Amphitheatre

Siren Amphitheatre is a great space to hold large presentations and town-hall events.

Enquire for pricing and availability

Inclusions:

- AppleTV console for easy screen sharing
- AV equipment includes a projector, screen (2.4m x m) and Sonos.
- Instructions are supplied for connection.

Seating options:

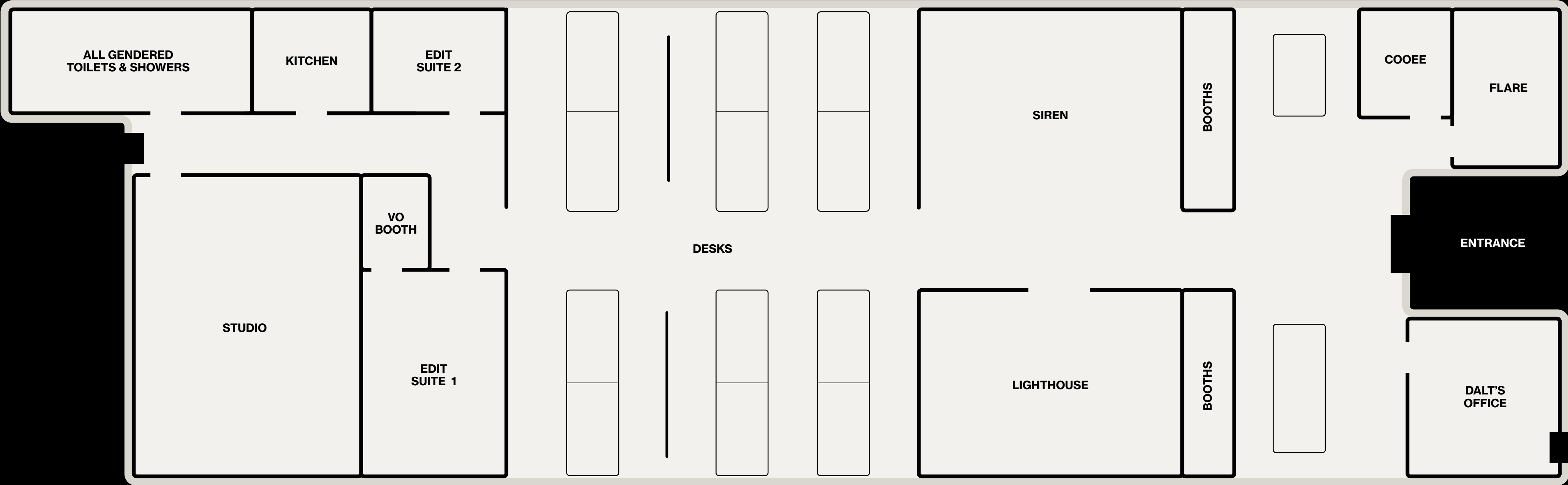
- 3 tables and 12 seats
- Tiered seating for up to 50 pax



HQ



HQ floor plan



HQ Amenities

General Kitchen and Bathroom supplies are provided and are complimentary for all Desk and Space/Room bookings to use.

- Kitchen inclusions:
- A variety of milk and condiments
 - Fresh Fruit is delivered every Tuesday - help yourself!

- Rest Room inclusions:
- A range of sanitary personal care items
 - Hairdryer
 - Hair straightener
 - Hand held mirrors
 - Brush and comb
 - Manicure set
 - Clothes steamer

Signage is displayed throughout these areas for where things are stored and usage and cleaning instructions are displayed for the coffee machine, oven, fridge and dishwasher.

These are shared spaces for everyone to use, so please clean up after yourself.



Safety

First Aid

We have a fixed First Aid Kit located on the wall in the kitchen and a grab-and-go kit located in the front office.

Evacuation Plan

We have trained Fire Wardens on site, and our Fire and Emergency evacuation plan is in accordance with Work Health and Safety Regulation 2017 and Australian Standard AS3745 – Planning for Emergencies in Facilities.

Signage is displayed throughout HQ for evacuation processes.



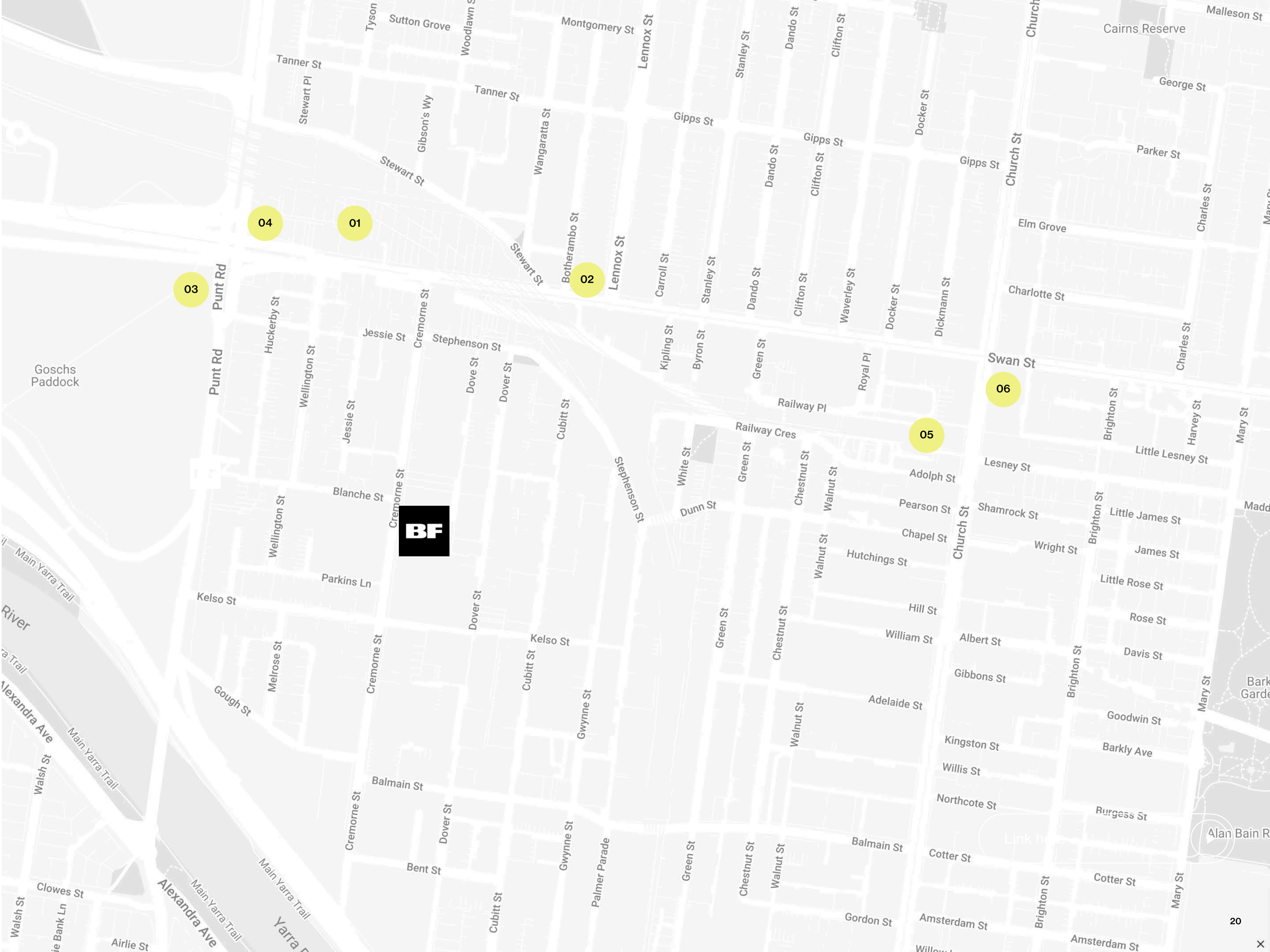


THE AREA

Public Transport

We're really spoiled when it comes to PT. Bullfrog HQ is right down the street from Richmond train station, the 70 tram and the 246 bus. Plus, we're only a short walk from the 78 tram and East Richmond Station.

- 1. Richmond Station
- 2. Route 70 tram
- 3. Route 246 bus to Clifton Hill
- 4. Route 246 bus to Elsternwick
- 5. East Richmond Stations
- 6. Route 78 tram

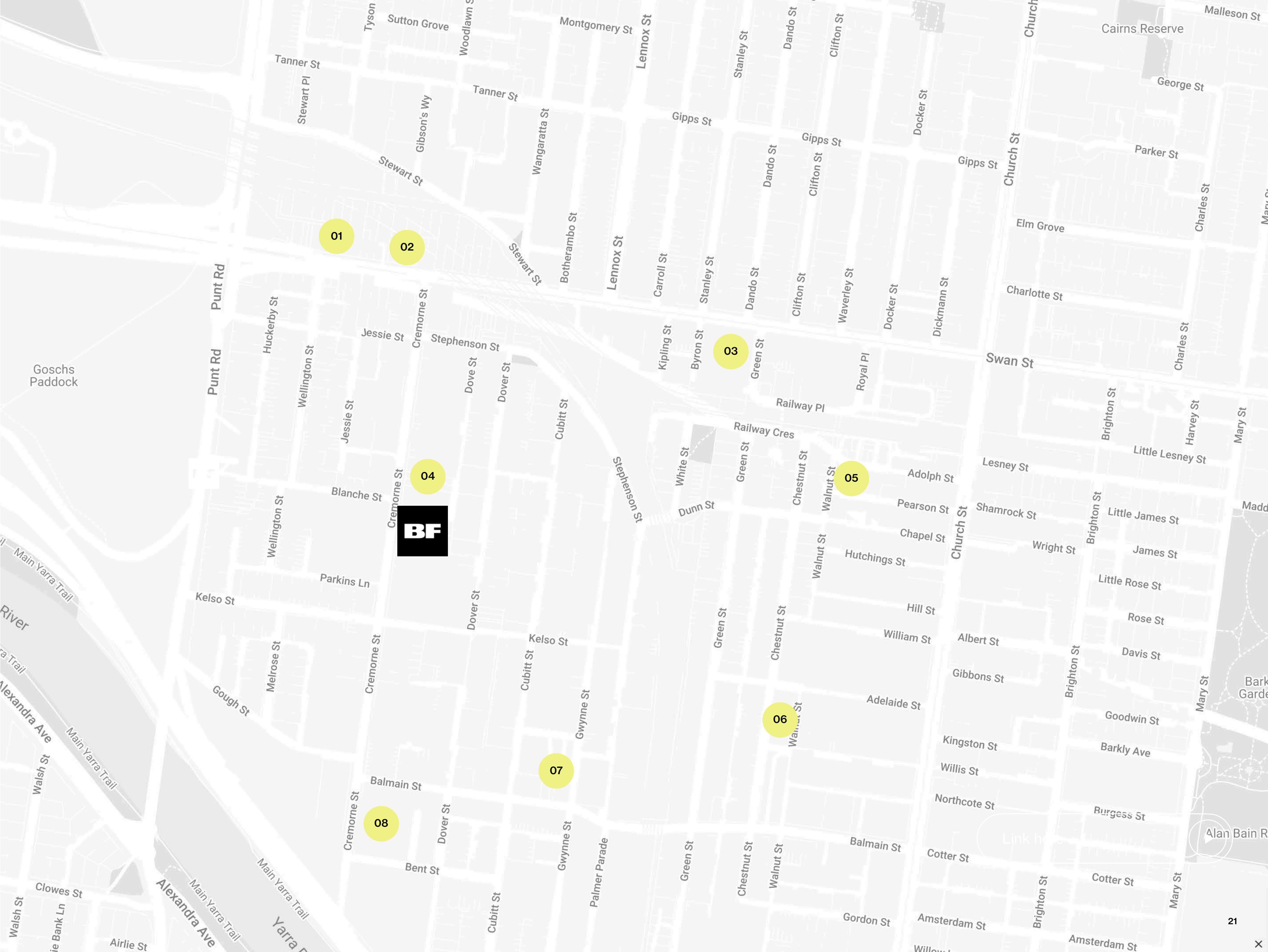


Car Parks

There are a number of 2-hour and 4-hour on-street parking options available on Cremorne Street. There is also a ‘pay by the hour’ car park located next door to Bullfrog HQ and several other parking areas close by.

- 1. Carepark - 13-15 Swan Street, Richmond
- 2. Carepark - 35 Swan Street, Richmond
- 3. Ace Parking - 140-160 Swan St, Cremorne
- 4. Kangan Parking - 71 Cremorne St, Cremorne
- 5. Ace Parking - 125 Walnut St, Cremorne
- 6. Ace Parking - 1560 Church St, Cremorne
- 7. Wilson Parking - 70 Gwynne St Car Park
- 8. Ace Parking - 163 Cremorne St, Cremorne (monthly)

Please note that Bullfrog will not be responsible for any parking infringements received due to poor time management of parking. It is our own responsibility to ensure we are parked in the correct sign-posted areas and adhering to the costs associated with this.



Food

There are a number of cafes and catering options available that are close to Bullfrog HQ, some of our favourites below

Sloane Ranger (3 minute walk)
Variety of turkish bread rolls and sandwiches, nourish bowls, sweet slices
info@sloaneranger.com.au

LaManna & Sons Cremorne (10 minute walk)
Variety of wraps, salads, rolls, pasta
catering@lamannaandsons.com.au

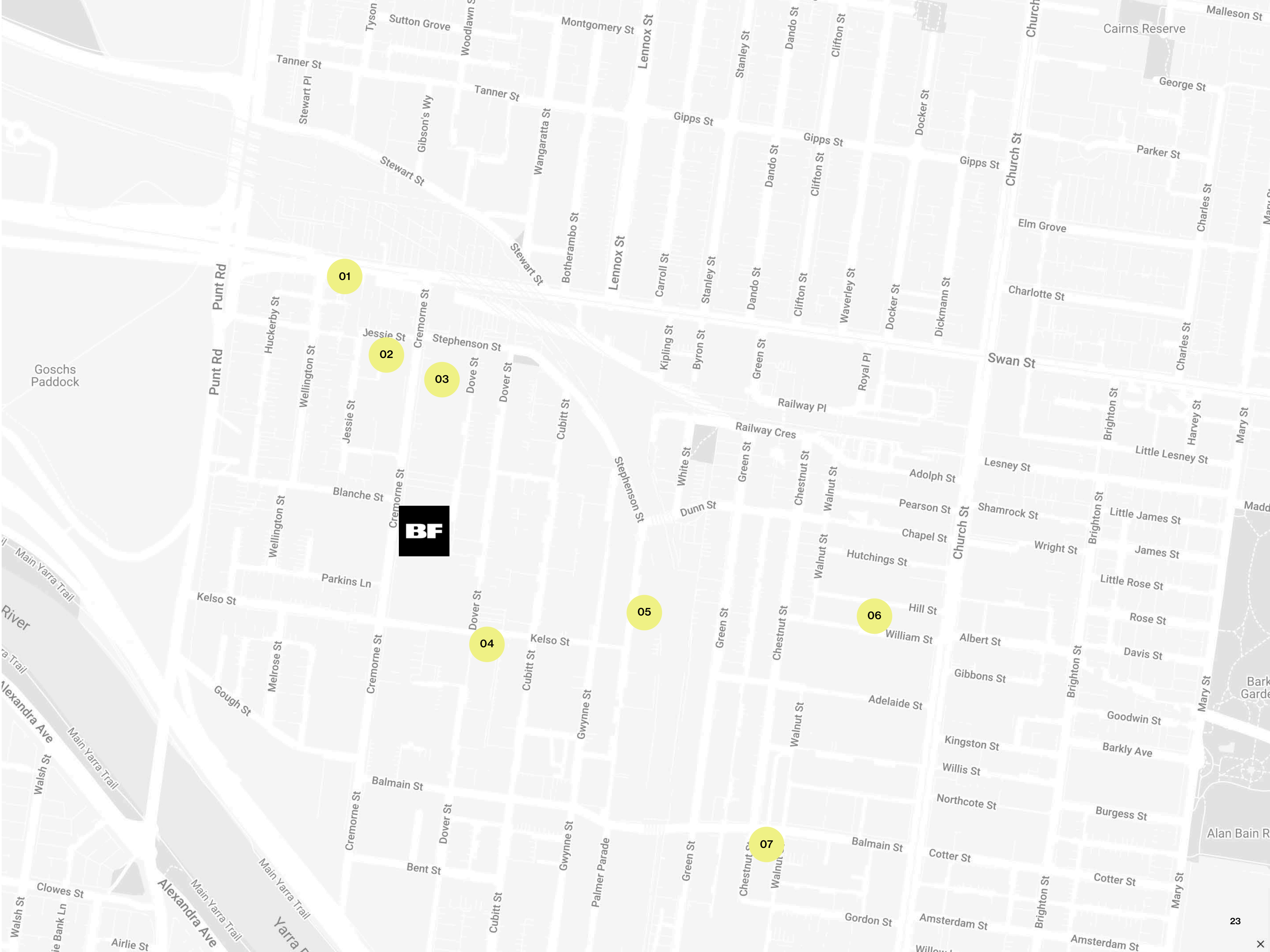
Absolutely Delicious Catering (delivery available)
Variety of savoury and sweet canapé options available
michelle@absolutelydelicious.com.au

Refer Map on the next page for some locations



Cafes close by

- 1. Vertue Coffee Roasters
- 2. 1983 Espresso & Panini Bar
- 3. Sloane Ranger
- 4. Industrial Coffee
- 5. Coe & Coe
- 6. Vacation Coffee
- 7. LaManna & Sons



How To Book

01

Email Us

Please email
bookings@bullfrogmedia.com.au for
all enquires

02

Specify the space

Choose which space you require
from the below options:

- Studio
- Edit Suite
- Cooee Podcast Room
- Lighthouse Boardroom
- Flare Meeting Room
- Siren Amphitheatre

03

Tell us the details

- Date(s)
- Number of team members on site
- Bump in time
- Bump out time

OPTIONAL

Request a site visit

If you would like to see the space
before your booking a site visit
can be arranged when requested.

Thanks for your
attention.

Visit
69 Cremorne St
Cremorne VIC 3121

BF